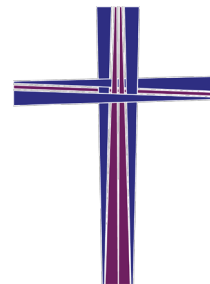




# Bethany Lutheran & Partners in Faith

*welcome you to worship!*



*Epiphany*

January 6, 2021

6:00 p.m.

## Order of Worship

### **We Gather**

**Prelude**

Amy Brekke

**Welcome**

**Confession and Forgiveness**

Blessed be the holy Trinity, + one God, who was in the beginning, who makes a dwelling among us, who covers us with justice and mercy.

**Amen.**

Let us confess our sin in the presence of God and of one another.

*Silence is kept for reflection.*

God of goodness and loving kindness, **we confess that we have sinned against you and our neighbors. We have turned away from your invitation to new life. We have turned away from the lowly and downtrodden. In your abundant mercy, forgive us our sins, those we know and those known only to you, for the sake of the one who came to live among us, Jesus Christ, our Savior. Amen.**

Hear the good news of peace and salvation! God forgives us all our sins, not through our own work, but through + Jesus Christ, made known to all people. With all who come to the manger, rejoice in this amazing gift of grace.

**Amen.**

**Gathering Hymn**

*“Lord, At Your Epiphany”*

Bulletin Page 4

**Apostolic Greeting**

The grace of our Lord Jesus Christ, the love of God, and the communion of the Holy Spirit be with you all. **And also with you.**

**Psalm of Praise for Epiphany**

**Psalm 72:1-7, 10-14**

<sup>1</sup>Give the king your jus- | tice, O God,  
and your righteousness to | the king's son;

<sup>2</sup>**that he may rule your | people righteously  
and the | poor with justice;**

<sup>3</sup>that the mountains may bring prosperity | to the people,  
and the | hills, in righteousness.

**<sup>4</sup>Let him defend the needy a- | mong the people,  
rescue the poor, and crush | the oppressor.**

**<sup>5</sup>May he live as long as the sun and | moon endure,  
from one generation | to another.**

**<sup>6</sup>Let him come down like rain upon | the mown field,  
like showers that wa- | ter the earth.**

**<sup>7</sup>In his time may the | righteous flourish;  
and let there be an abundance of peace till the moon shall | be no more.**

**<sup>10</sup>May the kings of Tarshish and of the | isles pay tribute,  
and the kings of Sheba and Seba | offer gifts.**

**<sup>11</sup>May all kings bow | down before him,  
and all the nations | do him service.**

**<sup>12</sup>For the king delivers the poor who cry out | in distress,  
the oppressed, and those who | have no helper.**

**<sup>13</sup>He has compassion on the low- | ly and poor,  
and preserves the lives | of the needy.**

**<sup>14</sup>From oppression and violence he re- | deems their lives,  
and precious is their blood | in his sight.**

### **Prayer of the Day**

**Almighty and ever-living God, you revealed the incarnation of your Son by the brilliant shining of a star. Shine the light of your justice always in our hearts and over all lands, and accept our lives as the treasure we offer in your praise and for your service, through Jesus Christ, our Savior and Lord, who lives and reigns with you and the Holy Spirit, one God, now and forever. Amen.**

### **Special Music**

*“Star of the East”*

Deb Slagstad

### **We Hear God’s Word**

### **Reading**

**Isaiah 60:1-6**

**<sup>1</sup>Arise, shine; for your light has come, and the glory of the LORD has risen upon you. <sup>2</sup>For darkness shall cover the earth, and thick darkness the peoples; but the LORD will arise upon you, and his glory will appear over you. <sup>3</sup>Nations shall come to your light, and kings to the brightness of your dawn. <sup>4</sup>Lift up your eyes and look around; they all gather together, they come to you; your sons shall come from far away, and your daughters shall be carried on their nurses’ arms. <sup>5</sup>Then you shall see and be radiant; your heart shall thrill and rejoice, because the abundance of the sea shall be brought to you, the wealth of the nations shall come to you. <sup>6</sup>A multitude of camels shall cover you, the young camels of Midian and Ephah; all those from Sheba shall come. They shall bring gold and frankincense, and shall proclaim the praise of the LORD.**

Word of God, word of life. **Thanks be to God.**

### **Gospel Acclamation**

*“Bethlehem Highway”*

Bulletin Page 5: Ref, Vs. 2, Ref

### **Gospel Reading**

**Matthew 2:1-12**

**<sup>1</sup>In the time of King Herod, after Jesus was born in Bethlehem of Judea, wise men from the East came to Jerusalem, <sup>2</sup>asking, “Where is the child who has been born king of the Jews? For we**

observed his star at its rising, and have come to pay him homage.”<sup>3</sup>When King Herod heard this, he was frightened, and all Jerusalem with him; <sup>4</sup>and calling together all the chief priests and scribes of the people, he inquired of them where the Messiah was to be born.

<sup>5</sup>They told him, “In Bethlehem of Judea; for so it has been written by the prophet: <sup>6</sup>‘And you, Bethlehem, in the land of Judah, are by no means least among the rulers of Judah; for from you shall come a ruler who is to shepherd my people Israel.’”

<sup>7</sup>Then Herod secretly called for the wise men and learned from them the exact time when the star had appeared. <sup>8</sup>Then he sent them to Bethlehem, saying, “Go and search diligently for the child; and when you have found him, bring me word so that I may also go and pay him homage.” <sup>9</sup>When they had heard the king, they set out; and there, ahead of them, went the star that they had seen at its rising, until it stopped over the place where the child was. <sup>10</sup>When they saw that the star had stopped, they were overwhelmed with joy. <sup>11</sup>On entering the house, they saw the child with Mary his mother; and they knelt down and paid him homage. Then, opening their treasure chests, they offered him gifts of gold, frankincense, and myrrh. <sup>12</sup>And having been warned in a dream not to return to Herod, they left for their own country by another road.

The gospel of the Lord. **Praise to you, O Christ.**

#### Message

Pastor Peter

#### Hymn of the Day

*“Arise, Your Light Has Come!”*

Bulletin Page 6

#### Prayers of Intercession

Lord in your mercy, **Hear our prayer.**

#### Sharing of Peace

The peace of Christ be with you always. **And also with you.**

### **We Celebrate the Lord’s Supper**

#### Offering

Bethany Text Giving Available: 715-303-3484

#### Offering Hymn

*“Drawn to the Light”*

Bulletin Page 7

#### Offering Prayer

Gracious God, **you came to us as one unknown, bringing joy and salvation to the earth. Nourish us at your banquet table, that with all who welcome your birth we may proclaim your peace, revealed in Jesus Christ, our Savior. Amen.**

#### The Great Thanksgiving

The Lord be with you. **And also with you.**

Lift up your hearts. **We lift them to the Lord.**

Let us give thanks to the Lord our God. **It is right to give our thanks and praise.**

#### Words of Institution

#### Lord’s Prayer

Gathered into one by the Holy Spirit, let us pray as Jesus taught us.

**Our Father in heaven, hallowed be your name, your kingdom come, your will be done, on earth as in heaven. Give us today our daily bread. Forgive us our sins, as we forgive those who sin against us. Save us from the time of trial and deliver us from evil. For the kingdom, the power, and the glory are yours, now and forever. Amen.**

## Invitation to Communion

Communion Hymn

*“Jesus, the Light of the World”*

Bulletin Page 8

Prayer after Communion

## We Are Sent

Announcements

Blessing

Sending Hymn

*“As with Gladness Men of Old”*

Bulletin Page 9: Vs. 1-3, 5

Dismissal

Go in peace. Share the gift of Jesus. **Thanks be to God.**

Postlude

Amy Brekke

Gathering Hymn

## Lord, At Your Epiphany

1. Lord at your Epiphany  
pour your wondrous light on me.  
Keep the great solemnity  
deep within my memory.

*Refrain:*

Lord, you've been a guiding light  
A fortress in the frightening night.  
Bend me to your gracious will  
And send me to your wasted children.  
Lord, at your Epiphany  
pour your wondrous light on me.

2. I was overcome with shame.  
Why, was I the one to blame?  
Heal me with your gentle touch,  
Shield me when I hurt too much. *Refrain*

Gospel Acclamation: Refrain, Verse 2, Refrain

# BETHLEHEM HIGHWAY

David Lee Brown  
James Hersch

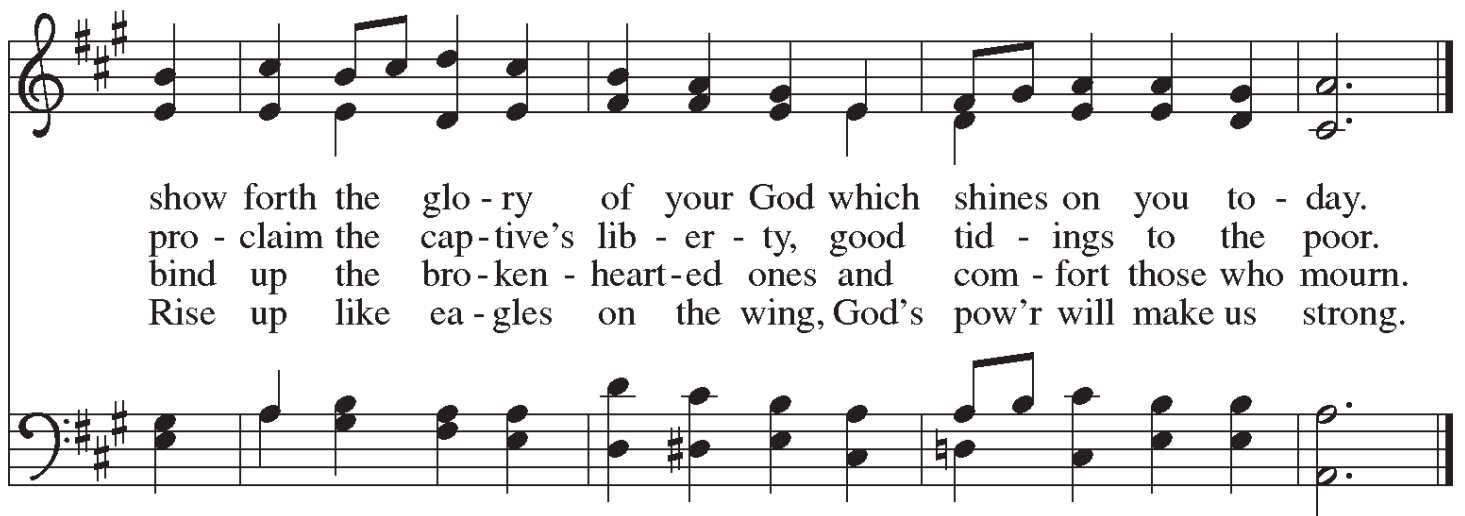
There is hope on Beth - le - hem high - way for the  
ones who will jour - ney there. And the hope is the  
child in a man - ger bring - ing us love be - yond com - pare. *Fine* It's a  
Let the  
life - line for the need - y. It's — sight — to those who can't  
an - gels go be - fore us. Let the dark - ness be - come —  
see. It's a free - dom for the faith - ful in a  
light. Now the Sav - ior lives a - mong us. Now  
Child of proph - e - cy. There is  
truth has come to life.

©1992 Dakota Road Music  
All Rights Reserved. Used by Permission.

## Arise, Your Light Has Come!



1 A - rise, your light has come! The Spir - it's call o - bey;  
2 A - rise, your light has come! Fling wide the pris - on door;  
3 A - rise, your light has come! All you in sor - row born,  
4 A - rise, your light has come! The moun - tains burst in song!



show forth the glo - ry of your God which shines on you to - day.  
pro - claim the cap - tive's lib - er - ty, good tid - ings to the poor.  
bind up the bro - ken - heart - ed ones and com - fort those who mourn.  
Rise up like ea - gles on the wing, God's pow'r will make us strong.

Text: Ruth Duck, b. 1947

Music: FESTAL SONG, William H. Walter, 1825-1893

Text © 1992 GIA Publications, Inc., 7404 S. Mason Ave., Chicago, IL 60638. [www.giamusic.com](http://www.giamusic.com). 800.442.3358.

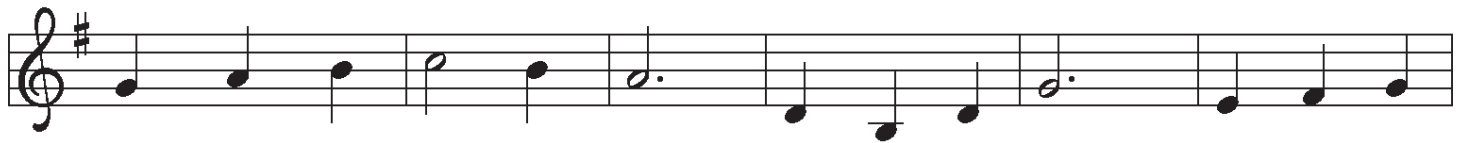
All rights reserved. Used by permission.

Duplication in any form prohibited without permission or valid license from copyright administrator.

## Drawn to the Light



1 Peo - ple who walk in dark - ness have sought a light in the  
2 How can we tell a heav - en from hell if ev - 'ry - one  
3 Where is the sun? Oh, there will be none! The Lamb is the



heart of the dark - est night. Just when we thought all would be  
dwells in the dark of night? Morn - ing dis - pels, gent - ly com -  
one who is shin - ing bright, bids us to come! Life has be -



lost, we were drawn to the light of God.  
pels, and we're drawn to the light of God.  
gun when we're drawn to the light of God.

*Refrain*



Dawn is in sight! Gone is the night, drawn to the



light and the morn - ing. Glo - rious and bright, oh, what a



sight to be drawn to the light of God.

Text: John C. Ylvisaker, b. 1937  
Music: LA CROSSE, John C. Ylvisaker  
Text and music © 1990 John C. Ylvisaker.

Duplication in any form prohibited without permission or valid license from copyright administrator.

## Jesus, the Light of the World



1 Hark! the her - ald an - gels sing, Je - sus, the Light of the world;  
2 Joy - ful, all you na - tions, rise, Je - sus, the Light of the world;  
3 Christ, by high - est heav'n a - dored, Je - sus, the Light of the world;  
4 Hail the heav'n-born Prince of Peace! Je - sus, the Light of the world;



“Glo - ry to the new - born King,” Je - sus, the Light of the world.  
join the tri - umph of the skies; Je - sus, the Light of the world.  
Christ, the ev - er - last - ing Lord! Je - sus, the Light of the world.  
hail the Sun of righ - teous - ness! Je - sus, the Light of the world.

### *Refrain*



We'll walk in the light, beau-ti-ful light, come where the dew-drops of mer-cy are bright.



Shine all a-round us by day and by night, Je - sus, the Light of the world.

Text: Charles Wesley, 1707–1788; addl. text "J.V.C."; adapt. George Elderkin  
Music: JESUS, THE LIGHT OF THE WORLD, traditional; arr. George Elderkin



## As with Gladness Men of Old



1 As with glad - ness men of old did the guid - ing star be - hold;  
2 As with joy - ful steps they sped, Sav - ior, to thy low - ly bed,  
3 As they of - fered gifts most rare at thy cra - dle, rude and bare,  
4 Ho - ly Je - sus, ev - 'ry day keep us in the nar - row way;  
5 In the heav'n - ly coun - try bright need they no cre - a - ted light;



as with joy they hailed its light, lead - ing on - ward, beam - ing bright;  
there to bend the knee be - fore thee, whom heav'n and earth a - dore;  
so may we with ho - ly joy, pure and free from sin's al - loy,  
and when earth - ly things are past, bring our ran - somed souls at last  
thou its light, its joy, its crown, thou its sun which goes not down;



so, most gra - cious Lord, may we ev - er - more be led by thee.  
so may we with will - ing feet ev - er seek thy mer - cy seat.  
all our cost - liest trea - sures bring, Christ, to thee, our heav'n - ly king.  
where they need no star to guide, where no clouds thy glo - ry hide.  
there for - ev - er may we sing al - le - lu - ias to our king.

Text: William C. Dix, 1837–1898, alt.  
Music: DIX, Conrad Kocher, 1786–1872

# The Bethany WeekAhead • January 10 - 16, 2021

**Sunday**  
**10** **Baptism of Our Lord**  
8:00 AM Worship/Streamed Online & Radio  
11:00 AM Club 9/Zoom

**Monday**  
**11** **Good NewsBreak Deadline**  
6:30 PM Property Committee/Zoom

**Tuesday**  
**12** 9:00 AM Staff Meeting/Zoom  
10:30 AM Executive Committee/Zoom  
12:00 PM Lunch Box/Parking Lot  
5:30 PM Personnel Committee/Zoom

**Wednesday**  
**13** 5:00 PM Here We Stand/Zoom

**Thursday**  
**14** 9:30 AM Caring Community Coordinators/Zoom  
5:00 PM Worship & Music/Zoom  
7:00 PM AA/3F

**Friday**  
**15**

**Saturday**  
**16**

*Main Level:* CR-Conference Room GR-Gathering Room LI-Library NA-Narthex SA-Sanctuary NS-Nursery  
*Lower Level:* LL-Luther Lecture FH-Fellowship Hall QR-Quilting Room YR-Youth Room *Upper Level:* 3F-3rd Floor

**Bethany Text Giving Available: 715-303-3484**

## **Pledge Information as of January 5, 2021**

**Pledge Commitments Received for 2021:** *General* - \$451,291 *Building* - \$62,270

*We have received pledges from 190 families.*

Last year at this time, we had received pledges from 200 families: *General* - \$497,148 *Building* - \$58,922

*Thank you for your participation in & support of the life & mission of Bethany Lutheran!*

**If you have not returned your 2021 pledge card, please do so at your earliest convenience.**

**Liturgical Acknowledgments:** From Sundays and Seasons.com. Copyright © 2021 Augsburg Fortress. All rights reserved. Reprinted by permission under Augsburg Fortress Liturgies Annual License #SAS006893.

Interim Pastor Peter Muschinske *Cell:* 314-703-1496  
Pastor Luci Sesvold *Cell:* 715-225-0979

**Upcoming Worship Opportunities:** Join us for worship on Sundays at 8:00 a.m.! Sunday worship is livestreamed on Bethany's website and Facebook page as well as broadcast live on WJMC FM96.1 & AM1240.

The next Wednesday worship will be for Ash Wednesday on February 17, 2021.

**Budget Forum:** If you have questions about the 2021 proposed budget, please attend the budget forum on Sunday, January 24, 2021 at 9:30 a.m. via Zoom. You can join via the Zoom app or telephone.

**Annual Meeting:** Bethany's Annual Meeting is Sunday, January 31, 2021 at 9:30 a.m. via Zoom. You can join via the Zoom app or telephone. If neither of these options works for you, please contact the office for more information on alternative attendance options.

If you have questions about the Annual Meeting process or contents, please contact Bill Evans, Council President. Rev. Erin Nelson from the NWSWI will be moderating and helping with Zoom.

**Follow Along with Worship:** The Sunday bulletins are available here, on Bethany's website homepage and archived on our bulletin publications page! We invite you to print a copy or follow along on your device with our order of service.

**Pledge Information as of January 5:**

Pledge Commitments Received for 2021:

General - \$451,291 and Building - \$62,270

We have received pledges from 190 families.

Last year at this time, we had received pledges from 200 families: General - \$497,148 and Building - \$58,922

If you have not returned your 2021 pledge card, please do so at your earliest convenience.

Thank you for your participation in and support of the life & mission of Bethany Lutheran!

**A Moment for Stewardship:** Thank you for the financial gifts you shared this year and the pledges you have submitted for 2021. Your generosity supports the multiple ministries of Bethany. If you have not returned your pledge for 2021, please do so at your earliest convenience. You may direct any questions to Dawn Paul, Business Director, at 715-296-2817.

**AmazonSmile:** Did you know that you can support Bethany when you shop on Amazon? You can make an impact while you shop for everyday items. Simply shop at [smile.amazon.com/ch/39-0872438](https://smile.amazon.com/ch/39-0872438) and AmazonSmile will donate to Bethany Lutheran Church, at no cost to you.

**Online Worship Archives:** Bethany archives previous worship services on their website and Facebook for 90 days. After that, the videos are removed, but there are hard copies in the office. If needed, you can contact Leah Hullinger at [lhullinger@bethanyricelake.org](mailto:lhullinger@bethanyricelake.org) for more information on older worship services.

**COVID-19 Update:** For the latest information from the Safely Regathering Task Force, please visit Bethany's COVID-19 Updates page. On the page you will find the bi-weekly update video, information about which phase of regathering Bethany is in and resource links for more information.

**Transition Task Force:** In everything we do, communication is the key! Communication happens in many ways and photos are communication that speaks without words. Please share your photos about, "What makes Bethany a great place to worship." These photos will be placed on the Transition Task Force's web page along with updates and information about Bethany's transition process. Please email photos to Leah at [lhullinger@bethanyricelake.org](mailto:lhullinger@bethanyricelake.org).

**Did You Know:** That the congregation assessment tool was completed by 225 people or 79% of the average worship attendance. There are primary benefits from this figure: 1) People were intent upon leadership's invitation to provide input and 2) There is strong confidence in the validity of the data with this level of response.

**Sunday School Lessons are available online:** Even though we are not meeting in person at the moment, you can still participate in Sunday School! The lessons are posted on Bethany's website under the At-Home Resources page. The page is password protected, due to copyright, so please see the email from Angie Buchli for the password. If you did not receive the email and password, please contact Angie at [abuchli@bethanyricelake.org](mailto:abuchli@bethanyricelake.org).

35 W. Messenger Street • Rice Lake, WI 54868 • Church Office: 715-234-9028

**Email:** lhullinger@bethanyricelake.org

**Website:** www.bethanyricelake.org

**Facebook:** Bethany Lutheran - Rice Lake, WI

**Live Radio Broadcast:** Sundays 8:00 a.m.

WJMC 96.1 FM & 1240 AM

**Worship:** Sundays 8:00 a.m.

**Live Streaming:** Sundays 8:00 a.m. on Bethany's website and Facebook page

**Cable Broadcast:** Channels 992 (Charter) & 993 (Mosaic)  
Sundays 11:00 AM & 7:00 PM; Thursdays 7:00 PM

## **Prayer Ministry**

**New Prayers for Members:** Dave Lhotka

**Ongoing Prayers for Members:** Sandie Anderson • Red Axtell • Jaquan Bever • Laif Bever • Irene Christianson • Bonnie Dahl • Ron Debner • Jonathan Fritz • Jim Hagen • Kevin Jacobson • Doug Karis • Carolyn Kochel • Alyssa McCullough • Dick Moe • Regina Mueller • Randy Read • Shirley Stokes • Virginia Tronstad • Ray Vaughn

**New Prayers for Family & Friends of Members:**

**Ongoing Prayers for Family & Friends of Members:** Bob Carter • Chuck Dahl • Mary Glaubitz • John Jaros • Clara Kern • Paul Klancher • Pr. Chad Kohlmeyer & Family • Bob & Marianne Koser • Charlie Lawton • Mark Loehlein • Gloria Mattakat • Colin McCann • Bruce Olson • Kaye Olson • Nolan Passint • Mary Simma • Holly Thompson • Kelly White (Anderson) • Paul Wilker

**Active Military Duty:** Tanner Ely • Samuel Krebs • Alex Kusilek • Jonathan Marsh • Ethan Nieman • Alain Pierre • Jason Randall • Abby Ring

**Sympathy and Grief:** Doug Brown and family upon the death of his mother, Barbara.

Pat Gilbertson and family upon the death of her husband, Gene.

Taylor Page and family upon the death of his mother, Doreatha.

Family and friends of Howard Pitts upon his death.

Jim Sevals and family upon the death of his mother, Mildred.

**Radio Broadcast:** Sponsored In Honor of Special Friends Edie Berg, Red & Pauline Eidahl, Regina Mueller and Nadine Reiten and In Memory of Nancy Brunner and Howard Pitts by Hannah Circle

You may make requests for the Prayer Ministry by calling the church office at 715-234-9028. You can also email bethany@bethanyricelake.org or fill out a request form on Bethany's website.

## **Prayers for Our Home Members**

Sandie Anderson • Edie Berg • June Brunette • Irene Christianson • Foster Dunwiddie • Pauline Eidahl • Donna Gagner • Elaine Gonske • Betty Granum • Nancy Herbert • Esther Honetor • Alice Johnson • Sid & Carolyn Johnson • Dick Moe • Lois Nefstead • Randy Read • Nadyne Reiten • Janie Riggs • Jaci Willhite

## **Congregational Leaders & Staff**

**Ministers:** All Members • **Ministry Team:** Peter Muschinske, *Interim Pastor*; Luci Sesvold, *Associate Pastor* •

**Director of Education, Youth & Congregational Ministries:** Angie Buchli • **Director of Business:** Dawn Paul •

**Communications & Publications Specialist:** Leah Hullinger • **Cleaner:** Amanda Baker •

**Council President:** Bill Evans • **Council Members:** Mal Bailey, Paul Baribeau, Tami Bowman, Pam Crouse, Andy Denison, Mike Diercks, Rachel Engel, Alexa Giddings, Mike Husak, Jennifer Nelson, Ed Skaw, Brad Wiedmann